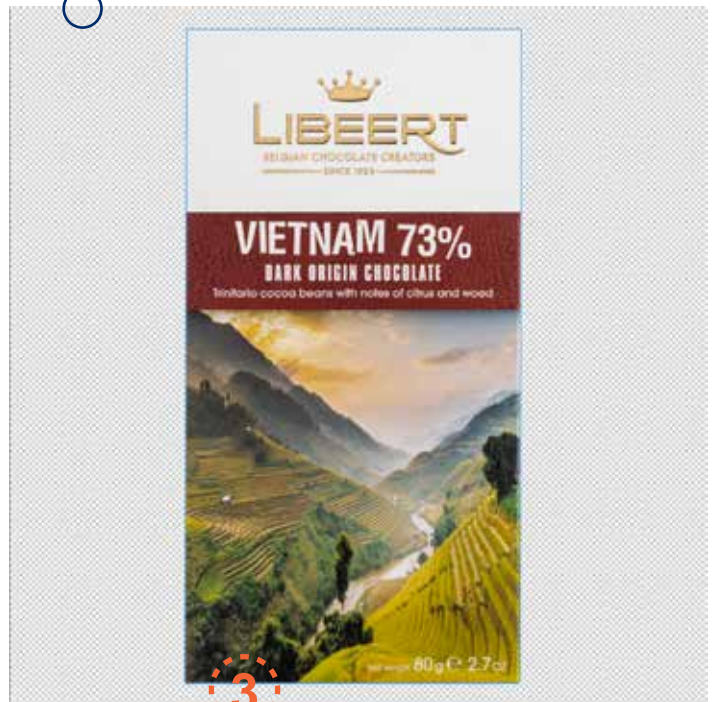


Checklist adding product images in the GS1 datapool

- 1. Name the file correctly:**
GTIN_C1N1 (e.g. 05411901082616_C1N1)
- 2. Image resolution is 300 dpi at minimum.**
- 3. The clipping path is named 'Path 1'.**
- 4. The file is created in color space RGB**
- 5. Colour profile is 8 bits per channel, use Adobe 1998.**
- 6. Image is a TIFF-file.**
- 7. The product must have EITHER a clipping path (named 'Path 1') OR a transparent background with 1 alpha channel (named 'Alpha 1') or both.**
- 8. The aspect ratio is 1:1 (square)**
- 9. Correct number of pixels:**
 - tag A / B: 900 - 2400 pixels
 - tag C / D: 2401 - 4800 pixels
- 10. The product must be fully visible and centered.**
- 11. The image size is max 50MB. (Only when using the web interface)**

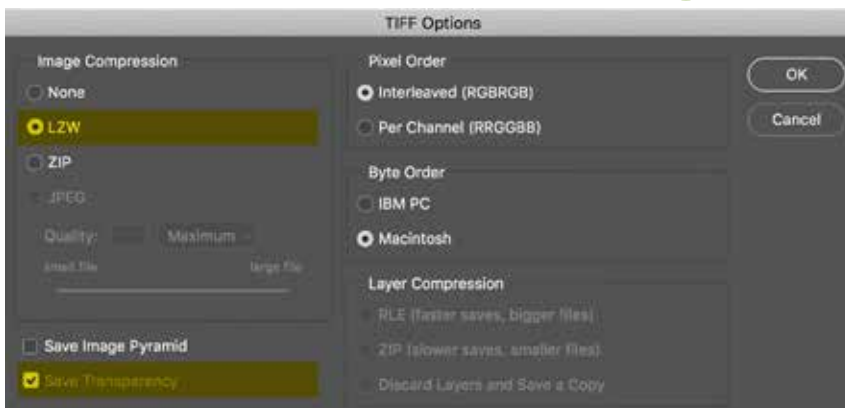
Transparency grid



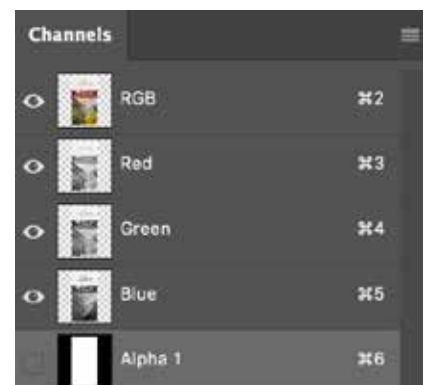
- Required**
- Recommended**



Clipping Path



TIFF file: LZW is a compression that does not impact image quality. 'Save transparency' must be selected or the area surrounding the product will not be transparent.



Alpha Channel

Checklist adding product images in the GS1 datapool

- 1. Name the file correctly:**
GTIN_C1R0 (e.g. 05425009852132_C1R0)
- 2. Image resolution is 300 dpi at minimum.**
- 3. The clipping path is named 'Path 1'.**
- 4. The file is created in color space RGB**
- 5. Colour profile is 8 bits per channel, use Adobe 1998.**
- 6. Image is a TIFF-file.**
- 7. The product must have EITHER a clipping path (named 'Path 1') OR a transparent background with 1 alpha channel (named 'Alpha 1') or both.**
- 8. The aspect ratio is 1:1 (square)**
- 9. Correct number of pixels:**
 - tag A / B: 900 - 2400 pixels
 - tag C / D: 2401 - 4800 pixels
- 10. The product must be fully visible and centered.**
- 11. The image size is max 50MB. (Only when using the web interface)**

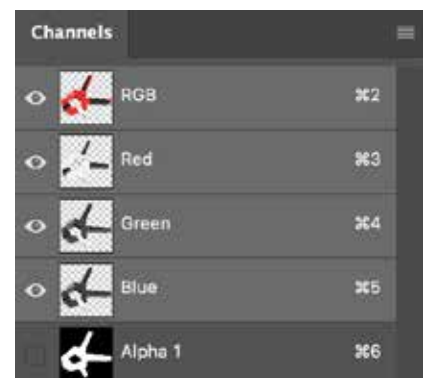
Transparency grid



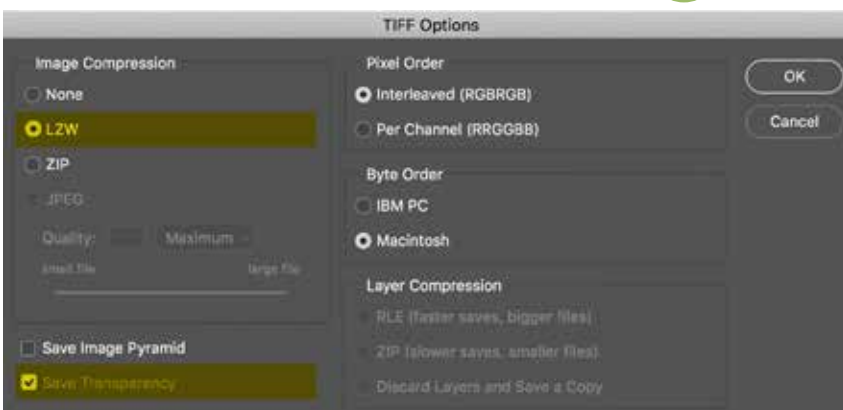
- Required**
- Recommended**



Clipping Path



Alpha Channel



TIFF file: LZW is a compression that does not impact image quality. 'Save transparency' must be selected or the area surrounding the product will not be transparent.

Checklist adding product images in the GS1 datapool

- 1. Name the file correctly:**
GTIN_C1L1 (e.g.: 05415200003181_C1L1)
- 2. Image resolution is 300 dpi at minimum.**
- 3. The clipping path is named 'Path 1'.**
- 4. The file is created in color space RGB**
- 5. Colour profile is 8 bits per channel, use Adobe 1998.**
- 6. Image is a TIFF-file.**
- 7. The product must have EITHER a clipping path (named 'Path 1') OR a transparent background with 1 alpha channel (named 'Alpha 1') or both.**
- 8. The aspect ratio is 1:1 (square)**
- 9. Correct number of pixels:**
 - tag A / B: 900 - 2400 pixels
 - tag C / D: 2401 - 4800 pixels
- 10. The product must be fully visible and centered.**
- 11. The image size is max 50MB. (Only when using the web interface)**

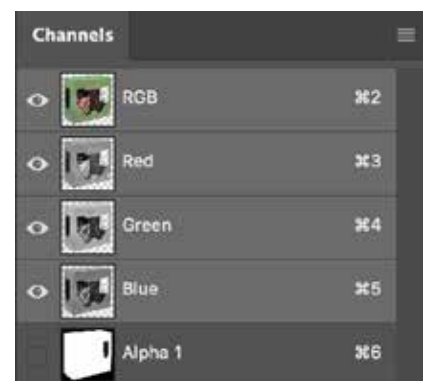
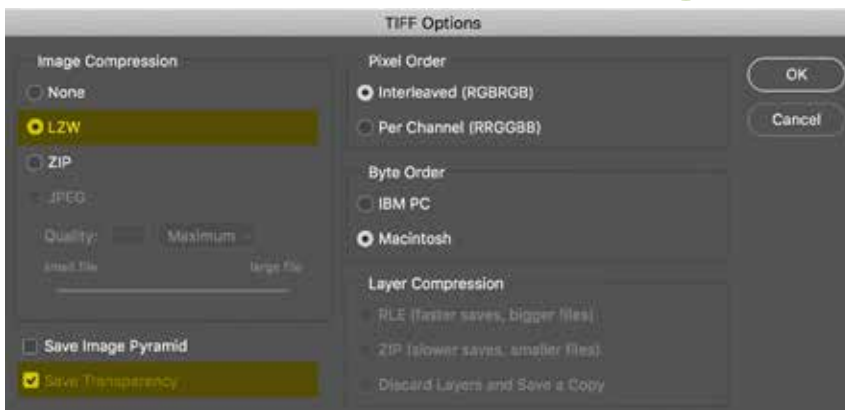
Transparency grid



- Required**
- Recommended**



Clipping Path



Alpha Channel

TIFF file: LZW is a compression that does not impact image quality. 'Save transparency' must be selected or the area surrounding the product will not be transparent.