



Belgium & Luxembourg

The Global Language of Business

GS1 Partners Brochure

GS1 Belgium & Luxembourg

29/12/2020

GS1 – the global language of business

GS1 is a global standards organisation

Neutral and
not-for-profit

User-driven
and governed

Global
and local

Inclusive and
collaborative

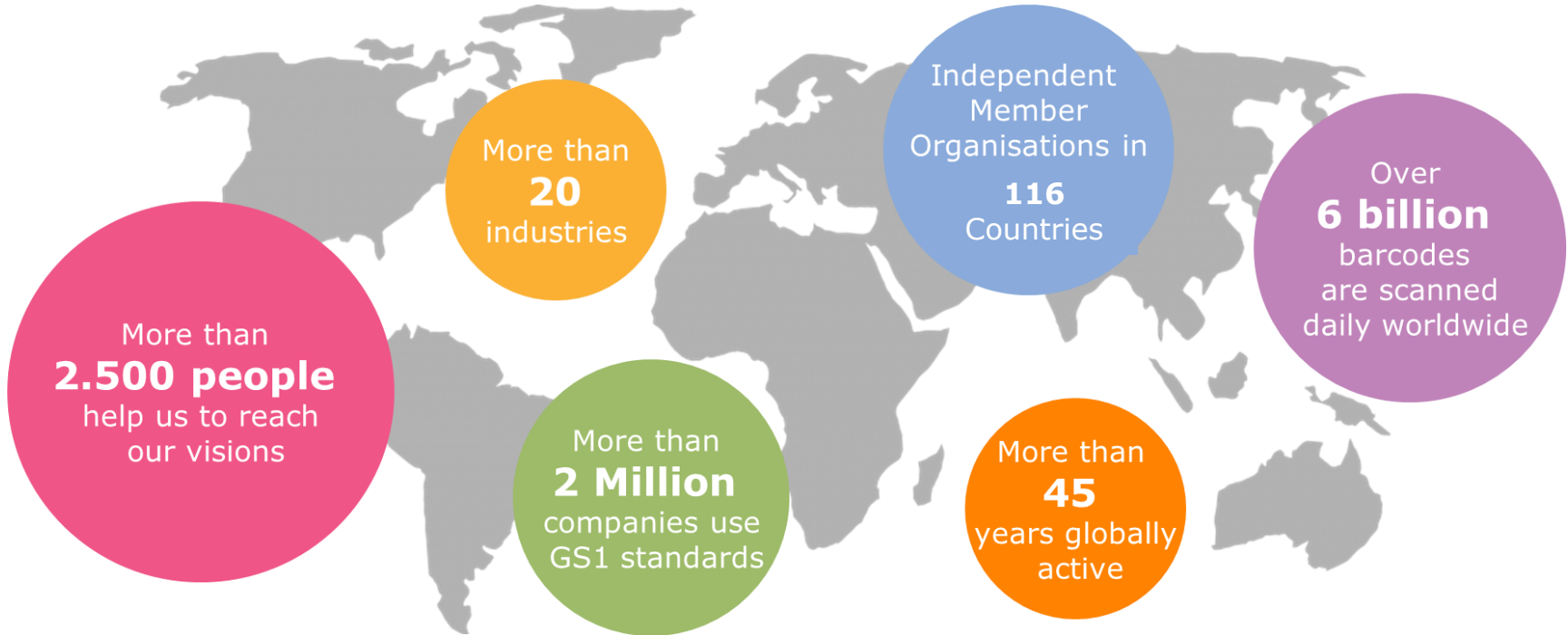




WE BELIEVE IN THE
POWER OF OPEN
STANDARDS
TO TRANSFORM THE
WAY WE WORK AND
LIVE.

We are a neutral platform that creates ideal conditions for cooperation

HOW



GS1 Belgium & Luxembourg



- Established in 1977
- 8200 members, active in different sectors:
 - Retail
 - Healthcare
 - DIY & garden
 - Transport & logistics
 - Foodservice
- Driven by our members, Board of Directors defines the strategy and priorities
- Staff: 40 FTE's
- www.gs1belu.org



Who can become a GS1 partner?



- A consulting company,
- a software editor or integrator,
- a hardware manufacturer,
- a digital solution provider
- or any other company offering services or solutions integrating GS1 standards.

→ In short, **if your company is led to encounter GS1 standards and you either need support or want to detect the right opportunities at the right time, then GS1 Partnership is made for you.**

Why become a partner?



Expand your area of expertise by including GS1 standards



Increase your visibility



Networking and business opportunities

The GS1 Partner offer (1/2)

- You have access to our **documentation** as well as to our **helpdesk** if you have any questions on this subject.
- You have access to our **support tools** such as Calimero to check your EDI messages (HO2C) or our barcode control service,...
- You have the possibility to get **GS1 Partner certification**.
- You will be **mentioned in our newsletters** (sent to >10.000 people) under the section GS1 Partners (subject to relevant topics).
- You will receive a **dedicated newsletter** where you will be kept up to date with the latest developments in standards.

The GS1 Partner offer (2/2)

- You can use the "**GS1 Partner**" logo for your communication.
- You are **listed in our directory of solution providers** on our website.
- You can **use our meeting rooms** in our office located in the centre of Brussels (subject to relevant topic).
- You can **request the presence of a GS1 employee** for your event (subject to relevant event).
- You have access to **preferential prices for our GS1 events** (booth, sponsoring, networking, ...).
- You are **invited to our annual partner event** to learn more about the GS1 strategy for the coming year.

GS1 Belgilux meeting room



Our workspace in the heart of Brussels

- GS1 Belgilux welcomes you in its office in the Ravenstein Gallery, just across Central Station.
- This modern and friendly space is fully in line with GS1's desire to offer a place designed for collaboration and exchange.
- 2 meeting rooms are open for GS1 partners meetings
 - Eddy Merckx
 - La Monnaie

GS1 Belgilux meeting room

La Monnaie



Eddy Merckx



La Monnaie



- **Capacity:** 10 places
- **Equipment :**
 - Wi-Fi
 - Screens HD
 - Visio conference
- **Included services:**
 - Water and coffee (free of charge)
 - Catering (upon charges)

Eddy Merckx



- **Capacity:** 24 places
- **Equipment :**
 - Wi-Fi
 - Screens HD
 - Visio conference
- **Included services:**
 - Water and coffee (free of charge)
 - Catering (upon charges)

Questions?

Contact us at support@gs1belu.org

Or visit our website for more information:

<https://www.gs1belu.org/en/partners-gs1-belgium-luxembourg>